



## 3 Bed Apartment located in Clapham

£2,500 PCM



ORLANDO REID

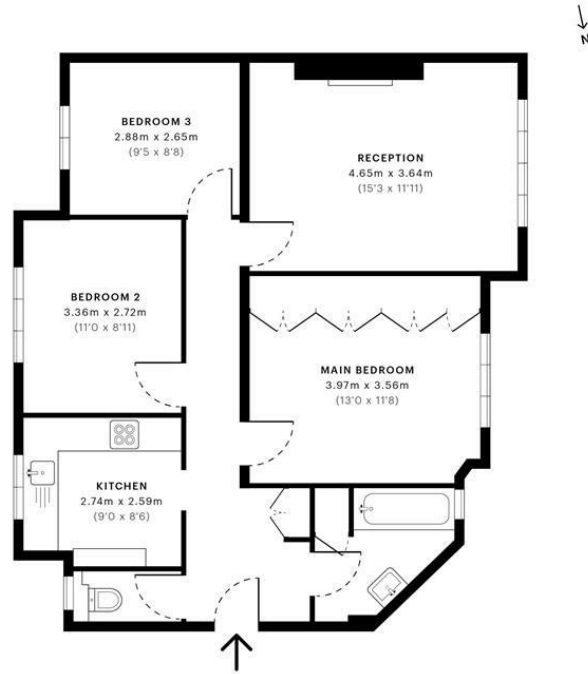


Thornclyffe Court, SW4

CAPTURE DATE 13/09/2022 LASER SCAN POINTS 58,553,288

GROSS INTERNAL AREA

73.77 sqm / 794.05 sqft



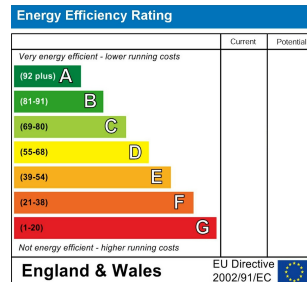
Ground Floor



Open floor plans are produced in accordance with:  
Royal Institution of Chartered Surveyors' Property Measurement Standards.  
Plans and gardens are illustrative only and excluded from all area calculations.  
Due to rounding, numbers may not add up precisely.  
All measurements shown for the indicated areas, heights and widths  
are the maximum points of measurements captured in the scan.

PLAN OR MEASUREMENT: 73.77 sqm / 794.05 sqft  
PLAN OR MEASUREMENT: 67.91 sqm / 730.38 sqft

SPIC ID: 5631f416d8889d230c3204bcbf



## DIRECTIONS

## CONTACT

1-3 Old Town  
Clapham  
London  
SW4 0JT

E: [lettings@orlandoreid.co.uk](mailto:lettings@orlandoreid.co.uk)  
T: 020 7627 3197  
[www.orlandoreid.co.uk](http://www.orlandoreid.co.uk)

ORLANDO REID